

.....

-

1994

.

:

: -

.

:() -

.

:() -

/

():

:()

.....

:

-
-
-
-
-
-

2005 / /30

:

-

-

.

:

:

•

.(-)

()

•

•

•

•

:

:

:

.

:

()

-

.()

-

.()

-

-

)

-

.(

.()

-

.(-)

-

.()

-

()

.

		() /		
	/	100	()	-1
		112		-2
		18	()	-3
		--	()	-4
		2		-5

:

:

•()

-1

:

100

34

(30)

()

(30)

()

2.5

:

-:

.1

()

_____.

.2

-:

()

(20)

%23

1000

-3

1000
250
300-200
40
60
160
()
-4
()
*

%25

:

()
-2
:

()
112
35

()

10000

()

2000

1948

.2000

:

80

.

35

()

(35)

(6)

°() - 3
:

2.5 18

15
3.5

(-)

()

_____ .
/

	700000	
	300000	
	1200	

()

البتروول /

(700)
(10)

:

-

-

-

-

()

" " /

• -4
/

)

(

()

(2)

. /
 : -1
 -) (- -2
 (-) -3
 (-) -4

/
 : -1
 -2
 -3

-4

-5

" "

11-8

-6

()

144

(gate pass)

1000

-7

()

-5

:

:

()

:

: -6

: -7

: -8

: -9

: -10

: **-11**

:()

:

:



-1

\

-2

-3

-4

20

-5

-6

-7

.

-8

()

.

-9

.

⋮

400-300

%40

()

%60

%10-8

.

-

:

•

:

•

.

•

.

•

:

-

.

-

.

-

.

-

-

-

.

:

-:

-1

-2

()

-3

-4

)
 .(-
 .
 -5
 -6
 .

 -1

112

35

-2

35

()

-3

-4

() _____ :

:

-

-1

-

()

-2

-3

12

()

:

:

-1

(2)

-2

-3

-4

(35)

:

-1

%34.3

%14.3

%17.1

-2

()

%82.9

-3

% 17.1

-4

%88.6

%11.4

-5

%31.4

()

%31.4

%14.3

-6

%71.4

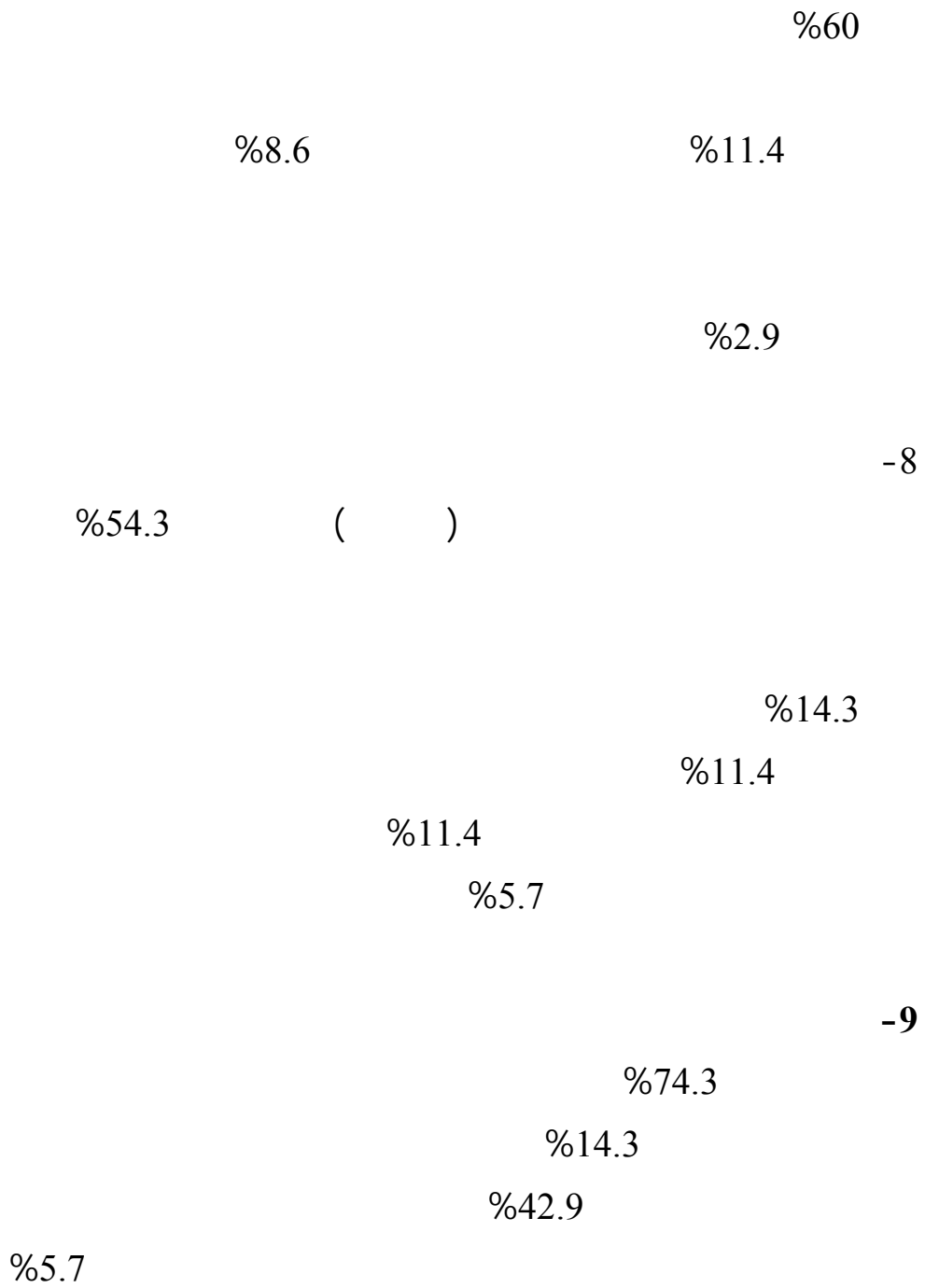
%25.7

%1

%80

-7

%20



%2.9

%25.7

%57.1

-10

%17.1

%22.9

-11

:

-1

11.4

-2

%8.6

%2.9

-3

-4

%2.9

%54.3

-5

-

.

-

)

(

.

:

%13- 11

%18

2004 %6

%76

-

-

. 2004 %45

2000 28

:

-

)

-

(

-

2004

:

:

:

2004

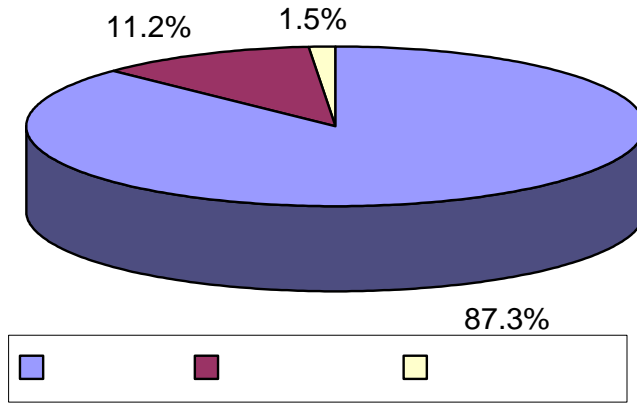
: (1)

%		%		%		%		
44.8	277.133	-	-	28.26	19.541	47.65	257.592	
42.9	265.676	100	9.386	69.36	47.966	38.54	208.324	
12.3	76.296	-	-	2.38	1.643	13.8	74.653	
%100	619.105	100 %	9.386	100 %	69.15	100 %	540.569	

/ -

:

.2004



265.676				
2004			%42.9	
	2001	2002	%33.69	%34
%18				%78.4
			%3.6	
)				
%12.3			76.296	(
2001	2002	%18.7	%14	2004
				%98
542.809				
	%49		%51	
	2003		%17.9	
	.	⁸	661.1	

⁸ الجهاز المركزي للإحصاء الفلسطيني، نشرة المؤشرات الربعية، كانون أول 2004 .

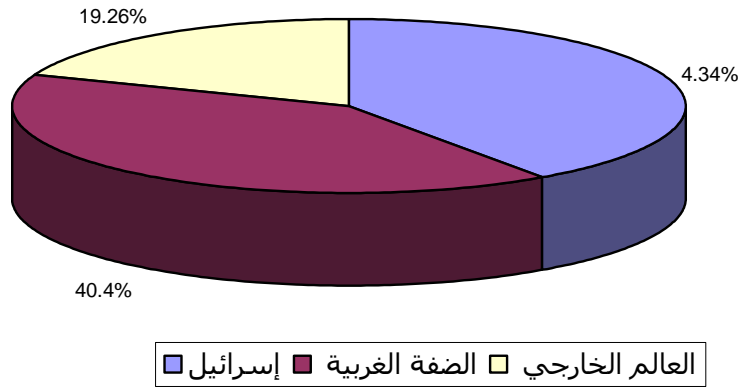
:

2004 47
3.98
. 2002 %96 2001 %73 2004
2004 : (2)

6724	19	
3252	19	
1599	9	
11575	47	

- :
.2004
%40.4 %19.26 %40.3

2004 11575
964.6
%28 %14 %58



28.46

51.9

2001

2004 2003 2002

32% 68%

2003 45.2%

9

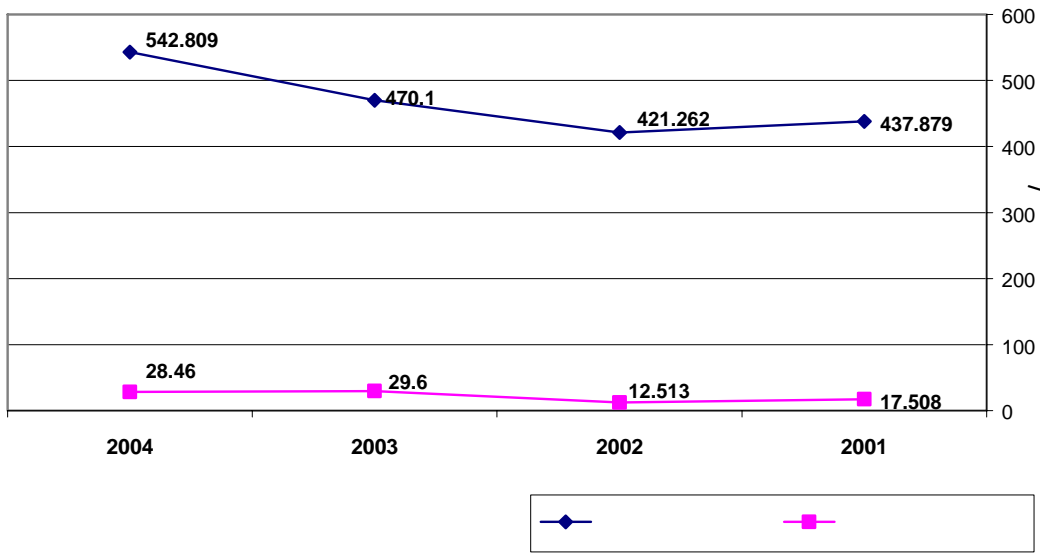
(3)

2004	2003	2002	2001	
542.809	470.1	421.262	437.879	
28.46	29.6	12.513	17.508	
571.269	499.7	433.775	455.387	
- 514.349	-440.5	- 408.749	- 420.371	
%5.2	%6.3	%3	%4	(%)

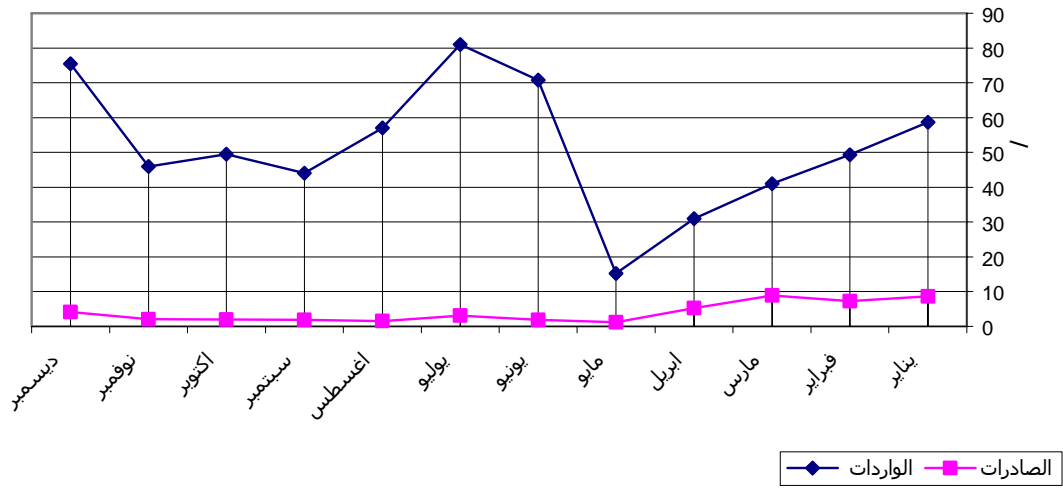
- - :

2004 2002 2001

⁹ الجهاز المركزي للإحصاء الفلسطيني، نشرة المؤشرات الربعية، كانون أول 2004 .



2002 2001 2004
 2003
 571.3 2002 433.8
 %25.8 %2.8 2002 2004
 2001
 2004-2002



2004

(78)

(14)

2002 2001

: (4)

2004 2003

2004	2003	2002	2001	
277.133	271.234	252.468	257	
19.263	19.525	8.278	10.305	
%7	%7.2	%3.3	%4	(%)
296.396	290.759	260.746	267.305	
- 257.87	-251.709	- 244.19	- 246.695	

- -

:

.2004 2002 2001

%10 2004-2002
 %132
 %7 2004
 %93
 .2002 %26 2004 257.87
 2001 : (5)
 2004 2003 2002

2004	2003	2002	2001	
265.676	198.863	168.793	180.878	
9.2	10.066	4.235	7.203	
%3.5	%5.1	%2.5	%4	(%)
274.876	208.929	173.028	188.081	
- 256.476	-188.797	- 164.558	- 173.675	

- - :
 .2002-2004 2001

-

-

%78

.

%57.4 %117 2004-2002

%3.5

. 2004 256.5 %56 2004- 2002
 2001 :(6)

2004 2003 2002

2004	2003	2002	2001	
76.296	78.218	69.533	92.968	
19.263	28.735	11.872	10.07	
95.56	106.953	81.405	103.038	
- 57.033	-49.483	- 57.661	- 82.9	

- -

:

.2002.2004 2001

(6)

2004

95.6

%80

%25

57

*** () **

⋮
⎯⎯⎯
"
10"
⎯⎯⎯
⋮

⋮
-1

¹⁰ - المصدر : المعهد العربي للتخطيط بالكويت ، " خصخصة البنية التحتية " ، سلسلة جسر التنمية ، العدد الثالث عشر ، يونيو / حزيران 2003 ، ص2.

-2

-3

-4

-5

-6

-7

-8

-

-1

()

%87

%11.2

%1.5 ()

() -2

%23

1000

250

40

300

-3

%82.9

-4

%80

-5

%54.3

-6

-7

-8

-9

()

-10

()

-11

-12

"	"	-1
	.2001,2002,2004	
		-2
		.2004
"	"	-3
.2003		

**4-Gaza boarder crossing , current status ,
July 26 2004.**

(1)

. -
:() -1
.....
.....

) -2
:(
-1
-2
-3
-4
-5
-6

-3
:
%..... -1
%..... -2
%..... -3

%.....		-4
%.....		-5
:		-4
	-2	-1
:()		-5
		-1
		-2
..... ()		-3
.....		
)	-6
	:(
()		-1
		-2
		-3
		-4
		-5
.....()		-6
.....		
:		-7
	-2	-1
:()		-8
		-1
		-2
		-3
..... ()		-4
:		-9

	-3	-2	-1
	-6	-5	-4
:			-10
.....			-1
.....			-2
.....			-3
:()			-11
	-2	-1	
:()			-12
			-1
	-	-	-2
			-3
..... ()			-4
-			- 13
			-:
	-2	-1	
:			-14
			-1
.....()			-2
			-2
			-3
..... ()			-4
:			-15
			-1
			-2

..... () -3

- 16

:

.....-1

.....-2

.....-3

.....-4

.....-5

.